

## Table of Contents

### PRESIDENT'S MESSAGE

2012 Conference a Success . . . . . 1

### PAST-PRESIDENT'S COLUMN

Getting Ready for the Big Easy in 2013 . . . . . 2

NASPSPA in the Big Easy . . . . . 3

### NASPSPA AWARD RECIPIENTS

President's Award . . . . . 3

Early Career Distinguished Scholar Award . . . 4

Distinguished Scholar Award . . . . . 5

2012 Student Awards . . . . . 6

### STUDENTS' COLUMN

Students Contribute to Success of NASPSPA. . 7

Thank you to former Executive Board Members. . 8

Minutes and Reports. . . . . 8

## PRESIDENT'S MESSAGE

# 2012 Conference a Success!

*John Shea, NASPSPA President*



John Shea

I think most members who attended the 2012 NASPSPA conference in Honolulu, Hawaii, would agree that it was an outstanding one. The venue was very memorable—Hawaii provided a beautiful backdrop for an exciting and intellectually stimulating

program. Right up to the opening of the conference, the Executive Committee was concerned that we might have overshot our attendance goals at a time of economic restrictions in our membership institutions. As it turned out, we did not, and the attendance was record-setting! Much of the credit for the success of this year's conference belongs to Dr. Jody Jensen. In her capacity as Past-President, she organized the conference and worked with her Area Program Chairs to ensure its success. Jody has provided visionary leadership by introducing topics such as re-envisioning NASPSPA's image, a possible name change, and the possibility of a European conference site. She was even responsible for securing accounts for NASPSPA on Twitter

(<https://twitter.com/NASPSPA>) and Facebook ([www.facebook.com/NASPSPA](http://www.facebook.com/NASPSPA))!

The 2013 conference in New Orleans promises to be just as rewarding and will provide a very different cultural backdrop for another intellectually stimulating program. Dr. Diane Ste-Marie has been

[Continue to page 9](#)

## Executive Committee

### President

*John Shea, Indiana University*

### President-Elect

*Alan Smith, Michigan State University*

### Past-President

*Diane Ste-Marie, University of Ottawa*

### Past-Presidents' Liaison

*Maureen Weiss, University of Minnesota*

### Secretary-Treasurer

*Shannon Ringenbach, Arizona State University*

### Communication Director

*Jeff Fairbrother, University of Tennessee, Knoxville*

### Student Representative

*Jenn Tomasone, McMaster University*

## PAST-PRESIDENT'S COLUMN

# Getting Ready for the Big Easy in 2013

*Diane Ste-Marie, NASPSPA Past-President*



Diane Ste-Marie

I hope everyone returned from Hawaii rejuvenated and ready to head into busy campus life once again. The start of the semester brings the last in the series of our triannual newsletter and our early thoughts about the next NASPSPA conference.

As Past-President, I have the pleasure of serving as the program chair for the 2013 conference, which will be held June 13 to 15 at the Hilton Riverside Hotel in “The Big Easy” city; New Orleans. A change from the regular schedule of NASPSPA was initiated in Hawaii—that is, the program began Thursday morning. We plan to follow in their footsteps and conference presentations will be opening on Thursday morning to allow for more programming time. At this early juncture we will also highlight that a happy hour will be held late in the afternoon of the opening Thursday, in lieu of wine and cheese, thus providing members with an evening to sample New Orleans’ incredible offerings of fine cuisine.

I am pleased with the great slate of people who will be assisting me with the planning of

this conference. The Area Program Chairs have chosen a great team of colleagues to ensure a high-quality program. For Motor Learning and Control, we have Nikki Hodges (University of British Columbia, Canada) as program chair and team members Jim Lyons, Carolee Winstein, David Wright, and Wilbur Wu. Sport and Exercise Psychology will be headed by Jennifer Cummings (University of Birmingham, UK) and supported by Mark Bruner, Lindsay Duncan, Diane Mack, and Sarah Williams. Finally, our last committee section will be Developmental Perspectives; in which the team members of Jan Hondzinski and Michael Wade will be led by Juergen Konczak (University of Minnesota, USA). All Area Program Chairs are now in contact with possible keynotes, and I know that we will have a most interesting line-up of international researchers presenting their research to our scientific community. Updates on the program will be posted on our website, so stay tuned to [www.naspspa.org](http://www.naspspa.org).

At last year’s conference we had great success with the number of symposia in the program due to the great response to our call for symposia submissions. We continue to promote these submissions, but do ask that they bring in individuals from a range of research laboratories that examine the same issues but will

create open discussion and debate about the issues. The same topic may be examined from different research paradigms or with different methodologies or different populations, just to give a sampling of some ideas for generating stimulating symposia.

The abstract submission process will open on December 1 and close on January 25. You will find specific directions about abstract submissions on the NASPSPA website at [www.naspspa.org](http://www.naspspa.org). Please be sure to follow the guidelines specified for the submission process as omissions and errors in data entry cause much work and cost to the organization. The area program committees will immediately begin reviewing submissions and making decisions at the closing of the submission process. Our intent is to have decisions communicated between March 1 and March 15 so that you can make the necessary arrangements to assist the conference. In late March, the planning committee will have determined the mode and time of presentations, and our goal is to have the first draft of the final program ready in early April to be sent to the members. If you have questions about the conference program, please do not hesitate to contact me.

## NASPSPA in the Big Easy

**Thursday, June 13, through Saturday, June 15, 2013**

NASPSPA will take place at the New Orleans Hilton on the riverfront—walking distance to the French Quarter and other sites. Known as the Big Easy, New Orleans is a fabulous city with many attractions, including plantations, museums, historic buildings, streetcars, and the French Quarter. The food is fabulous and the music out of this world. Read up on a little history before you come so you can enjoy your time there:

[The People and Culture of New Orleans](#)  
[New Orleans Online](#)

### NASPSPA AWARD RECIPIENTS

## President's Award

As the 2012 recipient of the President's Award, Dr. Richard Magill received his award plaque from President Diane Ste-Marie during the 2012 Business Meeting.

The President's Award is in recognition of individuals who have made significant contributions to the development and growth of NASPSPA. It is without any surprise that Diane Ste-Marie, President of NASPSPA, announced that the 2012 recipient for this award is Dr. Richard (Dick) Magill. Dick has been involved with our society at multiple levels: his roles on the Executive Committee as

Please remember that NASPSPA encourages all attendees to stay at the conference hotel. The organization signs contracts with hotels that ensure we have good meeting space, and these agreements are based on our commitment to fill rooms. This is a great site. A link for hotel space will be on the NASPSPA website near the end of the year. When you submit your abstract, reserve your hotel room.



New Orleans Hilton



Dick Magill and Diane Ste-Marie

## NASPSPA AWARD RECIPIENTS

# Early Career Distinguished Scholar Award

**As the 2012 recipients of the Early Career Distinguished Scholar Award, Dr. Quincy Almeida and Dr. Catherine Sabiston received their award plaques from President Diane Ste-Marie during the 2012 Business Meeting. Both winners will present at the 2013 Annual Meeting in New Orleans.**

Dr. Almeida earned his BS and MS degrees from McMaster University and his PhD from the University of Waterloo. His research interests are understanding the neurocognitive and neuromotor mechanisms underlying how movements are planned, learned, and controlled, with specific interest in basal ganglia dysfunction. His approach involves examining those primarily with neurodegenerative disorders such as Parkinson's disease as well as neurological disorders such as stroke and apraxia in a variety of control modalities (including upper-limb

coordination, gait, balance, and speech). Since many of these disorders occur in older adults, he is also interested in the effects of aging and the potential benefits of rehabilitation. We will be delighted to hear Dr. Almeida speak at the 2013 conference in New Orleans.

Dr. Catherine Sabiston began her studies at Dalhousie University in their School of Health and Human Performance and earned her master's degree at the University of Windsor. She completed both her doctoral training and postdoctoral fellowship at the University of British Columbia. Her

expertise is in exercise and health psychology. Dr. Sabiston's research interests are focused on the link between indicators of emotional well-being and physical activity motivation and behavior. Her studies target individuals who are most at risk for low levels of physical activity, particularly women across the life span. We are looking forward to hearing about her research at our next annual conference in New Orleans.

### Nominations for NASPSPA Early Career Distinguished Scholar Award

The NASPSPA Early Career Distinguished Scholar Award recognizes outstanding achievement of scholars who are still in the early stage of their scientific careers. Current members of NASPSPA who received their doctorate no more than seven years prior to nomination are eligible for the Early Career Distinguished Scholar Award. Nominations may be made to the President by any NASPSPA member. Deadline for nominations is December 15. Nomination information can be found in the NASPSPA Policy Manual (available at [www.naspspa.org](http://www.naspspa.org)).



Quincey Almeida & Diane Ste-Marie



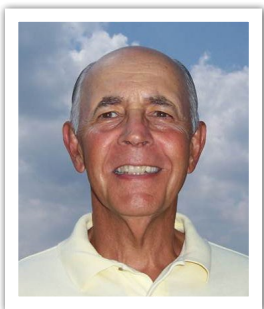
Catherine Sabiston & Diane Ste-Marie



## NASPSPA AWARD RECIPIENTS

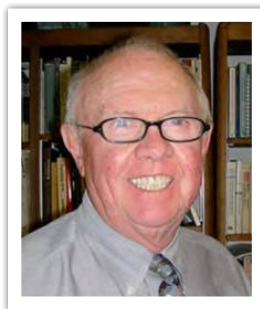
## Distinguished Scholar Award

2012 recipients of the Distinguished Scholar Award were Dr. Robert Christina and Dr. Michael Wade.



Dr. Robert Christina

Dr. Christina was recognized as a 2012 Distinguished Scholar of NASPSPA. As noted in his nomination letter, Bob has had a distinguished 40-year career with no end in sight. Since he earned his PhD from the University of Maryland in 1970, his research has focused on understanding the underlying processes by which people come to learn and perform skilled movements and determining the most effective conditions for learning and performing movement skills. He has authored and coauthored 120 scientific and professional publications and four books, and he edited or coedited seven more books. He has given more than 250 scientific and professional presentations (most invited) throughout the world. Bob's great blending of applied and theoretical issues led to his impressive publication record. Even though Bob is retired, it is no surprise that he continues to be a productive, internationally recognized scholar in the learning and performance of movement skills such as those found in sport.



Dr. Michael Wade

NASPSPA is proud to recognize Dr. Michael (Mike) Wade as a Distinguished Scholar of our society. Dr. Wade is recognized for his myriad contributions to the academic promotion of kinesiology and motor development and control. He has published more than 20 book chapters, edited four books, and written two others. He has also published more than 60 journal articles in all of the relevant NASPSPA journals and other mainstream psychology journals. In the late 1960s to early 1970s, Mike was a leader in embracing the information-processing account for motor performance and is one of the giants of motor development for his insightful work and ability to see ahead of his field. He is still advancing the field, as noted by a 2011 publication (with Thomas Stoffregen) in *Psychological Science* on visual control of posture on land and sea.

### Nominations for NASPSPA Distinguished Scholar Award

The NASPSPA Distinguished Scholar Award recognizes outstanding long-term contributions in the research areas represented within NASPSPA. Senior scholars, normally at least 25 years beyond the doctorate, who have a distinguished record of scholarship are eligible for the award. Confidential nominations should be made to the President by December 15. Any current NASPSPA member may nominate appropriate candidates. Nomination information for all awards can be found in the NASPSPA Policy Manual (available at [www.naspspa.org](http://www.naspspa.org))

## NASPSPA AWARD RECIPIENTS

### 2012 Student Awards

Information on Student Awards can be found in the NASPSPA Policy Manual (available at [www.naspspa.org](http://www.naspspa.org)) Awards are available for outstanding student papers, research grants and international travel.

#### 2012 NASPSPA Outstanding Student Paper Award

The 2012 NASPSPA Outstanding Student Paper Award winner is Lindsay Kipp (Sport and Exercise Psychology) from the University of Minnesota.



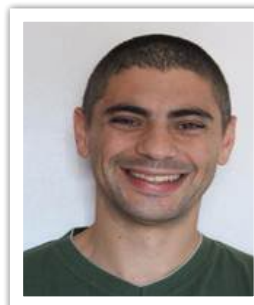
Lindsay Kipp and Diane Ste-Marie

#### 2012 NASPSPA Graduate Student Research Grants

The 2012 NASPSPA Graduate Student Research Grants (\$1,000 each) were awarded to Patrick Belling (Michigan Technological University), Guilherme Cesar (University of Southern California), Elizabeth “Kip” Webster (Auburn University), and Ya Yun Lee (University of Southern California).



Patrick Belling



Guilherme Cesar



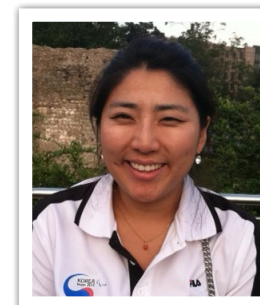
Kip Webster



Ya Yun Lee

#### 2012 NASPSPA Graduate Student Award for International Travel

Chih-Chia Chen (Arizona State University) and Veronica Son (Michigan State University) were each awarded the NASPSPA Graduate Student Award for International Travel.



Veronica Son

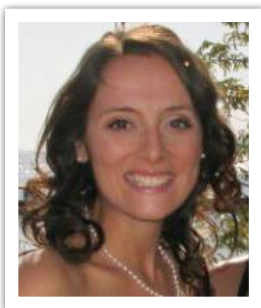


Chih-Chia Chen

## STUDENTS' COLUMN

## Students Contribute to Success of NASPSPA

Jenn Tomasone, NASPSPA Student Representative



Jenn Tomasone

Hello, NASPSPA student members. I hope this letter finds you well after an enjoyable summer. It seems like it was only yesterday that we were having fun on Waikiki Beach, and yet another fall semester is upon us.

Congratulations to all of you on your fantastic poster and verbal presentations in Honolulu. You definitely contributed to the success of the 2012 NASPSPA conference. I would like to acknowledge our fellow student members who were recognized at the 2012 conference for their exceptional work. Lindsay Kipp received the award for Outstanding Student Paper; Patrick Belling, Guilherme Cesar, Ya Yun Lee, and Kip Webster received Graduate Student Research Grants; and Chih-Chia Chen and Veronica Son received Graduate Student Awards for International Conference Travel. On behalf of all student members, I would like to extend a big thank-you to last year's Student Representative, Travis Dorsch, for his hard work in organizing the student activities. Both the student social and student-faculty roundtable lunch were well attended, and the beach party was certainly one of the many highlights of the conference.

NASPSPA is dedicated to the success of its student members and provides graduate students

with several award opportunities, which are both financially beneficial and a nice boost to your CV. Following is a summary, and further details are available on the NASPSPA website at [www.naspspa.org](http://www.naspspa.org). It's never too early to start thinking about applying for these awards.

1. Do you want to be recognized for your original, innovative, and significant research? Up to three **Outstanding Student Paper Awards** are available, one for each NASPSPA research area: *Motor Development*, *Motor Learning and Control*, and *Sport and Exercise Psychology*. Applications for this award (short abstract) are due January 25, and additional materials (five-page abstract and a letter of recommendation from your advisor) are due February 8. The value of this award is \$350.
2. Do you want to present at a conference outside North America but aren't sure if it is in your budget? The NASPSPA **Graduate Student Award for International Conference Travel** might be your solution. You may apply for this \$700 award by January 31, May 31, and September 30. The application package for this award must include a short abstract, a five-page abstract, a letter of information regarding the conference location and significance of research, and a letter of recommendation from your advisor.

3. Need help funding your research activities? The **Graduate Student Research Grant** provides up to \$2,000 that can be used toward research costs such as equipment, travel for data collection, and participant recruitment. To apply for this award, submit the following to the NASPSPA President before April 1: a five-page outline of the proposed study, verification of ethics approval, an estimated budget, a two-page CV, and a letter of support and approval of the budget from your advisor.

Looking forward to 2013, the NASPSPA conference will be in New Orleans from June 13 to 15. As always, the conference promises to provide an outstanding academic, social, and professional experience for graduate students. I am beginning to prepare for both the student social and student-faculty lunch. After paddle boarding at the student social in Waikiki, there was an overwhelming response to continue to include a physical activity as part of the social event. Thanks to those who completed the post conference survey and provided names of faculty members you would like to see included in next year's student-faculty lunch. I welcome any ideas or suggestions for possible venues and activities for the student social, as well as names of professionals for the student-faculty lunch. I encourage you to contact me at [tomasojr@mcmaster.ca](mailto:tomasojr@mcmaster.ca). Also, please let me know if you are interested in playing

[Continue to page 9](#)



## Thank You to Former Executive Committee Members

A heartfelt thank you is extended to all of the Executive Committee members who completed their terms of office in 2012: (Left to right in photo ) Jody Jensen ( Past-President), Howie Zelaznik (Past-Presidents' Liaison), Travis Dorsch (Student's Representative), and John Buchanan (Secretary-Treasurer).

## Minutes and Reports

### Spring Executive Committee Meeting Minutes

The NASPSPA 2012 Spring Executive Committee Meeting Minutes can be accessed via the NASPSPA website, in the following documents:  
[Pre-Conference Meeting Minutes 2012](#)  
[Business Meeting Minutes 2012](#)  
[Post- Conference Meeting Minutes 2012](#)

Official minutes will be posted after they are approved during the Fall Executive Committee Meeting on November 4, 2012.

### Financial Report and Membership Report

The NASPSPA 2012 Financial Report and NASPSPA 2012 Membership Report can be accessed via the NASPSPA website.

[Financial Report](#)  
[Membership Report](#)





Continued from page 1

## President's Message

working with her Area Program Chairs to plan a conference that will be every bit as exciting and intellectually rewarding as last year's meeting. I want to take this opportunity to encourage the membership to participate in this year's conference. Participation is the centerpiece for NASPSPA, and I hope we will see another record year with participation at the senior, middle, and early career levels. NASPSPA has served a unique role in the professional lives of its members, and I am enthusiastic when I see it continuing to do so. Members can choose to participate in many ways, including attending and presenting at the conference. Presentation of research at the conference necessitates early preparation, and it is important to keep in mind that this year's deadline for submission of abstracts is January 25, 2013. Remember that you must be a member to submit an abstract, and membership renewal for 2013 begins on November 1, 2012. Another way of participating is to volunteer to chair or serve on a committee. Great societies recognize outstanding contributors, and NASPSPA has strived to do this. My duties as President include chairing the Distinguished Scholar Award and Early Career Distinguished Scholar Committees. One valuable way for members to participate is to nominate candidates for awards. The deadline for these nominations is December 15, 2012. Also, the deadline for the Graduate Student Award for International Conference Travel is January 31, 2013 (additional deadlines are May 31, 2013, and September 30, 2013), and the deadline for the Graduate Student Research Grant is April 1, 2013.

I want to thank those who provided leadership

during the past year. Dr. Jody Jensen, as Past-President, was instrumental in the success of the recent conference as its chair. Jody assembled an outstanding group of Area Program Chairs whom I want to thank for their leadership in making their respective programs successful. These were Dr. Mark Williams, who chaired the Motor Learning and Control program; Dr. Al Smith, who chaired the Sport and Exercise Psychology program; and Dr. Jane Clark, who chaired the Developmental Perspectives: Physical Activity, Motor Coordination, Control, Learning and Rehabilitation program. Travis Dorsch, as Student Representative, provided outstanding leadership in developing and implementing student academic and social activities for the conference. I would be remiss if I failed to express our collective appreciation to Dr. Penny McCullagh. In her role as Conference Site Coordinator, Penny was instrumental in the selection of the outstanding conference site. We are fortunate to be the beneficiaries of Penny's continued commitment to ensuring our site selection is optimal and the conference runs smoothly. We can look forward to continued leadership with Dr. Al Smith as President-Elect and Dr. Shannon Ringenbach, who has assumed the responsibilities of Secretary-Treasurer from Dr. John Buchanan. Jenn Tomasone has taken on the role of Student Representative from Travis Dorsch, and Dr. Maureen Weiss has relieved Dr. Howie Zelaznik of the responsibilities of Past-Presidents' Liaison. I want to express appreciation to John, Howie, and Travis for their outstanding contributions to the society.

Continued from page 7

## Students Contribute to Success of NASPSPA

a bigger role in NASPSPA by organizing student events at the conference and being the liaison between student members and the Executive Committee throughout the year. The application deadline for next year's Student Representative position is February 1, 2013.

I look forward to hearing from you and seeing you in New Orleans. Good luck this semester!

---

### NASPSPA Newsletter

*Managing Editor: Amy Rose*

*Designer: Sean Roosevelt*

*Communication Director: Jeffrey Fairbrother*

*Copy Editor: Jan Feeney*



**Human Kinetics**

P.O. Box 5076 Champaign, IL USA 61825-5076

[www.HumanKinetics.com](http://www.HumanKinetics.com)